

Initial Setup

Before using Wimba Voice for the first time, you must run the Wimba Voice Setup Wizard to ensure that Wimba can correctly identify and configure your computer's audio hardware, Java settings, and record and playback levels.

1. To launch the Wimba Voice Tool Setup Wizard, go to:
<http://umn.horizonwimba.com/umn/wizard/launcher.jsp?show=wizard.frames>
2. When the introduction page appears, click *Next* to start the Wizard Tests.



3. To continue, check your Applets and Connectivity by clicking *Next*.



4. While testing Audio Playback, you should be able to hear the recorded message letting you know your speakers are set up correctly.



5. Click *Next* to continue testing audio recording.

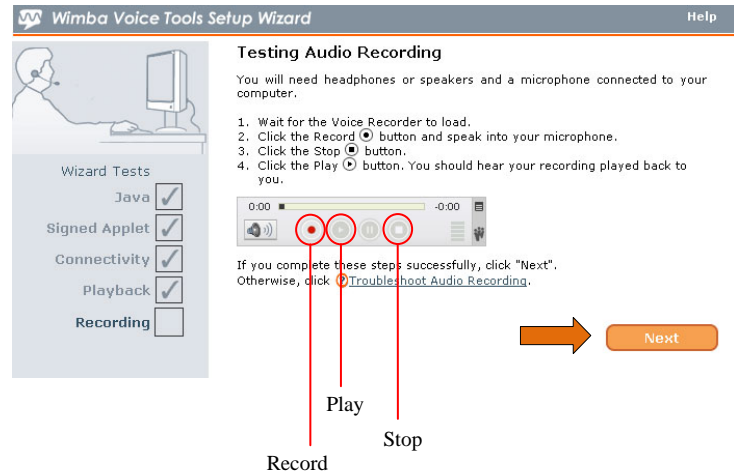


6. Make sure you have your microphone plugged into the correct port in the back of your computer.

Hint: The microphone port on PC's has a microphone symbol and is usually pink.

7. Click on the red *Record Button* and speak into your microphone to test your microphone. After you are done recording, click on the *Stop Button* and then click *Play* to hear the message you recorded.

Note: If your recording is not clear or does not work, click on the link *Troubleshoot Audio Recording*.



8. Click *Next*, and then on the next page click *Finish* to exit the Wimba Voice Tool Setup Wizard.

